

**CUSHMAN &  
WAKEFIELD**  
Waterloo Region

# COMMERCIAL LAND FOR SALE



**79 KING EDWARD STREET**

PARIS, ON

### PROPERTY FEATURES

- Excellent commercial development
- Lot located in the bustling town of Paris
- Strategically located between Hwy 403 and the downtown core
- 192 foot frontage onto King Edward Street (Hwy #2)
- Additional road access to Dundas Street West
- The C2 zoning (General Commercial) allows for a wide range of commercial development inclusive of automotive uses, medical, retail, grocery and community services
- The land is flat, building free and boasts multiple road access on this highly travelled thoroughfare



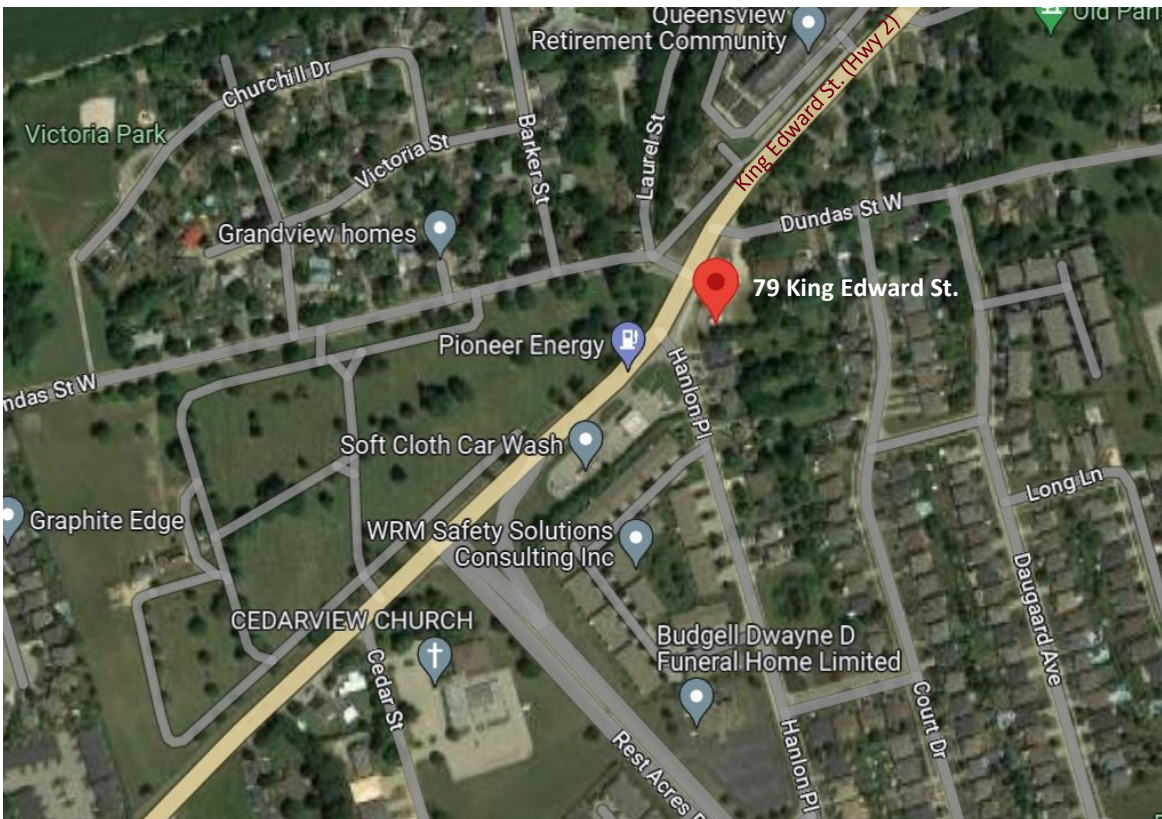
**New Sale Price**  
\$995,000.00



**Property Size**  
0.70 Acre



**ZONING**  
C2





For more information, please contact:

**STEWART CAMPBELL**

Sales Representative, Senior Vice President  
+1 519 804 4378  
Stewart.campbell@cushwakewr.com

**Cushman & Wakefield Waterloo Region Ltd., Brokerage**

4295 King Street East, Suite 401  
Kitchener, ON N2P 0C6  
Phone: 519-585-2200 | Fax: 519-650-5250  
cushwakewr.com