

# 227 MANITOU DRIVE

KITCHENER, ONTARIO

FOR LEASE 1,000 SF



**CUSHMAN &  
WAKEFIELD**  
Waterloo Region

# PROPERTY FEATURES

Rare brand new automotive garage space in Kitchener on Manitou Drive. Anticipating completion January 1 2021.



**UNIT SIZE**  
1,000 SF  
DIVISIBLE



**OCCUPANCY**  
JANUARY 1,  
2021



**ZONING**  
M4



**LOADING**  
1 DRIVE-IN  
12' X 13'



**CLEAR HEIGHT**  
18'



**PARKING**  
AMPLE  
SURFACE  
PARKING



**TAXES**  
\$5.20 SF



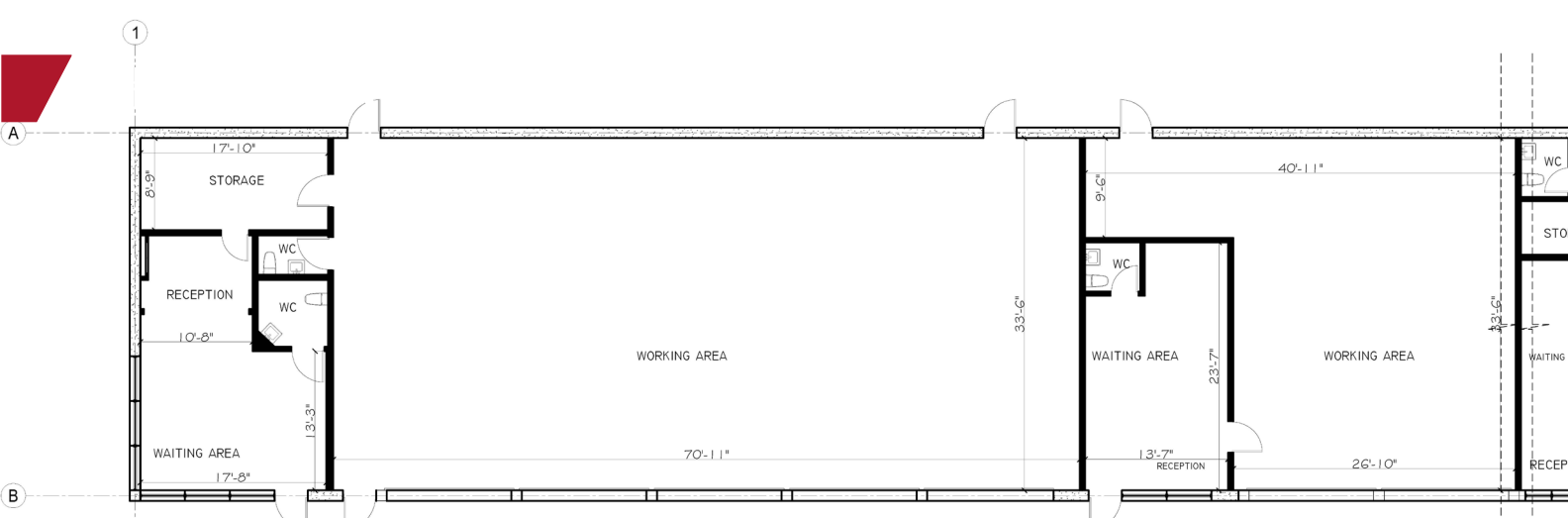
**LEASE RATE**  
\$20.00 SF



VIEW 3- BUILDING I

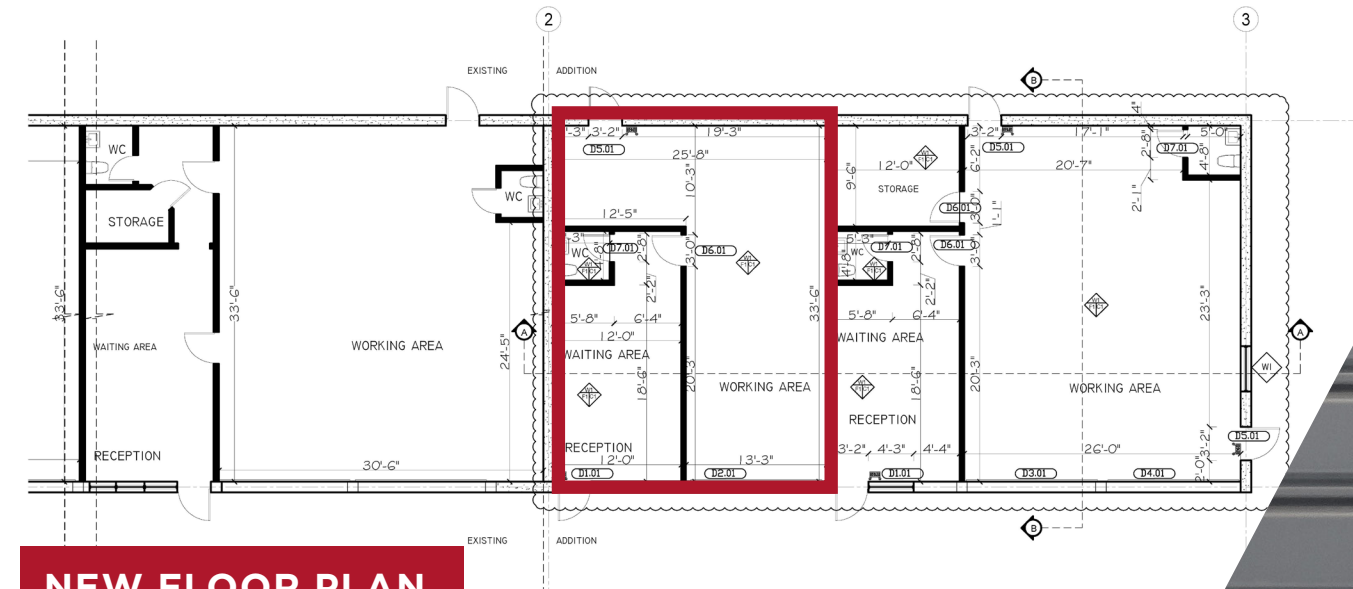


VIEW 4- BUILDING I



**EXISTING FLOOR PLAN**

BUILDING -2-



**NEW FLOOR PLAN**

# CONTACT

NICK HOLZINGER  
Senior Vice President  
+1 519 804 4325  
[mick.holzinger@cushwakewr.com](mailto:mick.holzinger@cushwakewr.com)

CONNOR WARD  
Sales Representative  
+1 519 804 4394  
[connor.ward@cushwakewr.com](mailto:connor.ward@cushwakewr.com)

©2020 Cushman & Wakefield. All rights reserved. The material in this presentation has been prepared solely for information purposes, and is strictly confidential. Any disclosure, use, copying or circulation of this presentation (or the information contained within it) is strictly prohibited, unless you have obtained Cushman & Wakefield's prior written consent. The views expressed in this presentation are the views of the author and do not necessarily reflect the views of Cushman & Wakefield. Neither this presentation nor any part of it shall form the basis of, or be relied upon in connection with any offer, or act as an inducement to enter into any contract or commitment whatsoever. NO REPRESENTATION OR WARRANTY IS GIVEN, EXPRESS OR IMPLIED, AS TO THE ACCURACY OF THE INFORMATION CONTAINED WITHIN THIS PRESENTATION, AND CUSHMAN & WAKEFIELD IS UNDER NO OBLIGATION TO SUBSEQUENTLY CORRECT IT IN THE EVENT OF ERRORS.

