



**CUSHMAN &
WAKEFIELD**
Waterloo Region

FOR LEASE

190 St. Andrew Street
Cambridge, Ontario



Property Features

- Small unit in convenience/retail plaza available for lease in the west end of Galt.
- The plaza consists of a mix of health, food and personal service uses. Building A includes Domino's Pizza, JC Retail, and Hearing Life (previously Listen Up). Building B includes Revkor Fitness and the BMO insta bank. Building C is the oldest building which has achieved heritage status and is currently leased to Mason Noir.
- The plaza is located next door to a primary school and close proximity to the Gas Light District and the Hamilton Family Theatre. CS5 zoning permits many uses including medical, personal service, take out restaurant, retail, etc

Property Details	
Available SF	1,641
LEASE RATE	\$14.00 PSF
CAM & TAXES	\$8.75 PSF
ZONING	CS-5, Bylaw 150-85
PARKING	Common surface parking

For more information, please contact:

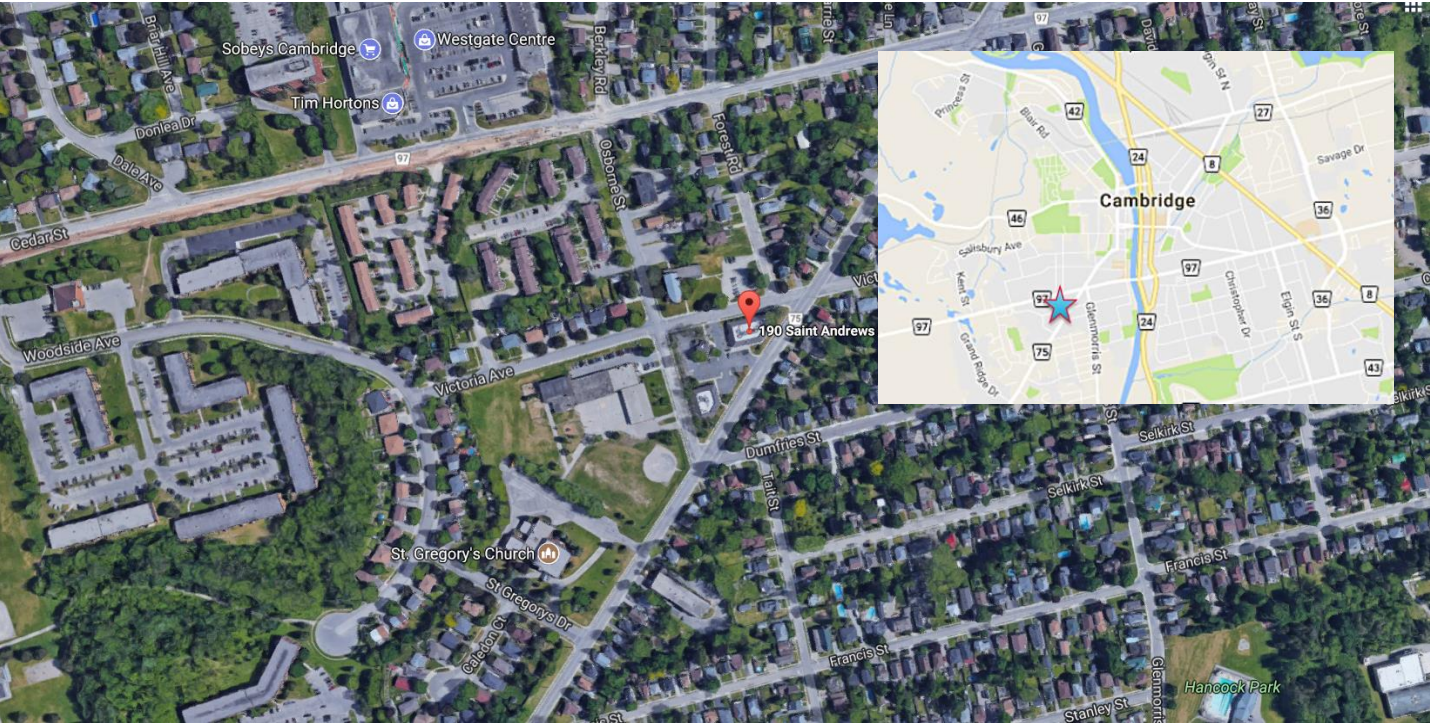
Mary Sojczyński
Associate Vice President
(519) 804 4338
mary.sojczyński@cushwakewr.com

Cushman & Wakefield
Waterloo Region Ltd.
4295 King St E, Suite 101
Kitchener, ON N2P 0C6
phone: +1 519 585 2200



CUSHMAN & WAKEFIELD
Waterloo Region

FOR LEASE
190 St. Andrew Street
Cambridge, Ontario



Demographics



Demographics	1 KM	3 KM	5 KM
POPULATION	9,100	42,900	73,100
DAYTIME POPULATION	3,200	18,600	44,000
AVERAGE INCOME	\$78,000	\$86,100	\$88,500

For more information, please contact:

Mary Sojczyński
Sales Representative
(519) 585 2200 x 249
mary.sojczyński@cushwakewr.com

Cushman & Wakefield
Waterloo Region Ltd.
4295 King St E, Suite 101
Kitchener, ON N2P 0C6
phone: +1 519 585 2200