



FOR LEASE

1315 Bishop St N
Unit 140
Cambridge, ON



HOME

HIGHLIGHTS

AVAILABLE

LOCATION

For more information, please contact:

Ian Cattrysse
Sales Representative / Associate Vice President
+1 519 804 4345
ian.cattrysse@cushwakewr.com

John Vickery
Sales Representative / Vice President
+1 519 804 4350
john.vickery@cushwakewr.com

cushwakewr.com

HOME

HIGHLIGHTS

AVAILABLE

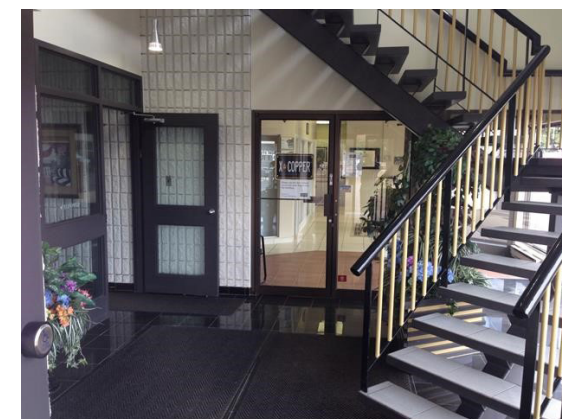
LOCATION

Property Highlights

- Office space available in one of the busiest corners in Cambridge
- Perfect for Medical/Dental or other professional offices
- Sub-lease for approximately 1.5 years or new Head Lease available up to 5 years

Space Available

Suite Number	Square Footage	Base Rent	TMI
Unit 140	1,300 SF	\$12.50/SF	\$9.00/SF



For more information, please contact:

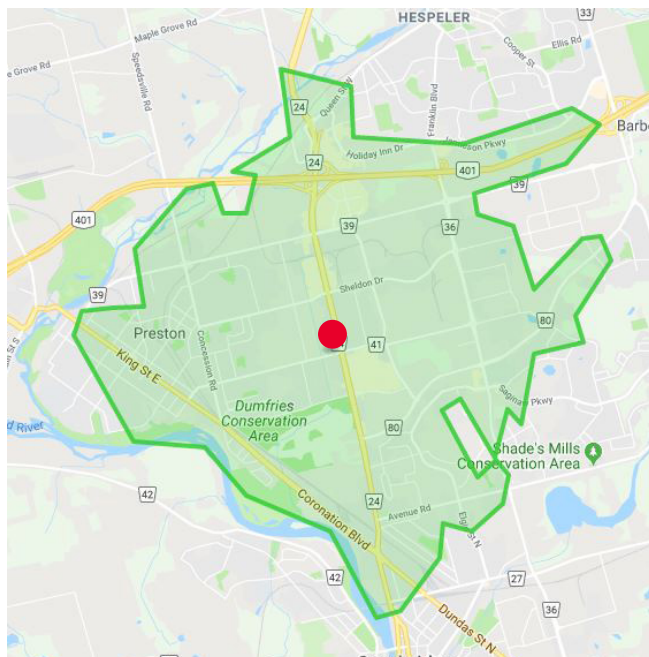
Ian Cattrysse
Sales Representative / Associate Vice President
+1 519 804 4345
ian.cattrysse@cushwakewr.com

John Vickery
Sales Representative / Vice President
+1 519 804 4350
john.vickery@cushwakewr.com

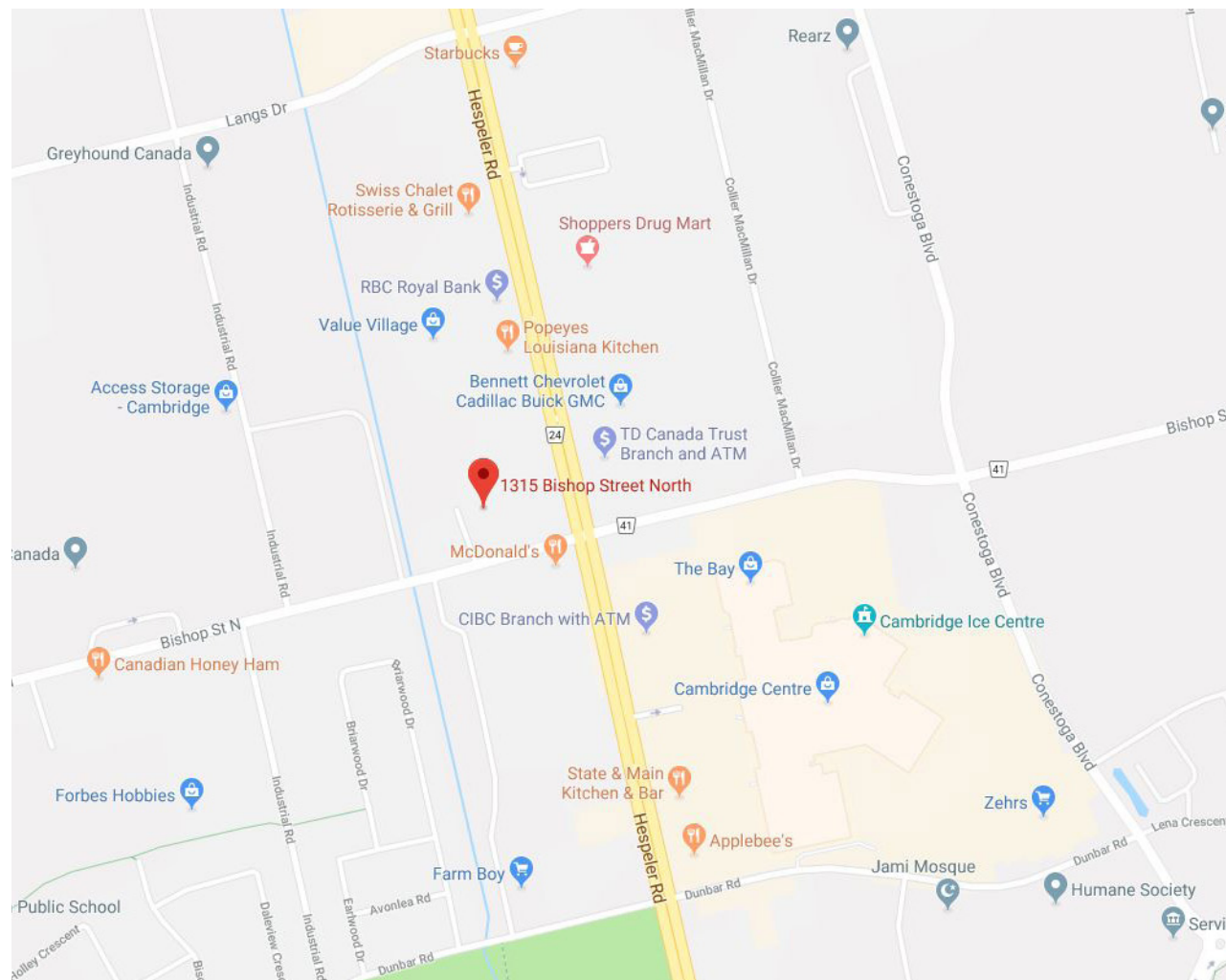
cushwakewr.com

Amenities

- Easy access to the Cambridge Centre and SmartCentres Cambridge on Hespeler Road
- Close to several restaurants, shops and cafes



5 Minute Driving Distance



For more information, please contact:

Ian Cattrysse
Sales Representative / Associate Vice President
+1 519 804 4345
ian.cattrysse@cushwakewr.com

John Vickery
Sales Representative / Vice President
+1 519 804 4350
john.vickery@cushwakewr.com

cushwakewr.com