



LEASE AVAILABLE



16 Essex Street, Unit 2

Guelph, Ontario

2,500 SF

REDEVELOPMENT SITE

This redevelopment site is located just off Gordon street in Guelph across from the Guelph farmers market and across the Infamous Church of our Lady Cathedral.

Offering 15 parking spaces

Located In The heart of downtown Guelph..



MARY SOJCZYNSKI

Associate Vice President

+1 519 804 4338

mary.sojczynski@cushwakewr.com

4295 King Street East, Suite 401

Kitchener, Ontario

Main +1 519 585 2200

Fax +1 519 650 5250

cushwakewr.com

©2019 Cushman & Wakefield. All rights reserved. The information contained in this communication is strictly confidential. This information has been obtained from sources believed to be reliable but has not been verified. No warranty or representation, express or implied, is made as to the condition of the property (or properties) referenced herein or as to the accuracy or completeness of the information contained herein, and same is submitted subject to errors, omissions, change of price, rental or other conditions, withdrawal without notice, and to any special listing conditions imposed by the property owner(s). Any projections, opinions or estimates are subject to uncertainty and do not signify current or future property performance.

16 Essex Street – Unit 2

Guelph, Ontario

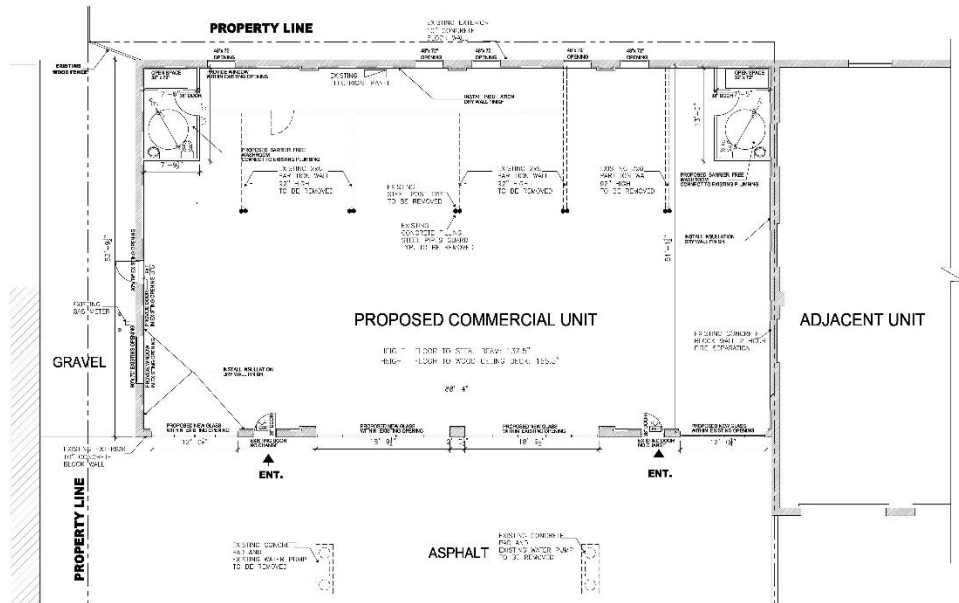
2,500 SF

AERIAL/LOCATION MAP



Property Highlights

Available SF	2,500
Parking	15 Parking Spaces
Zoning	C5
TMI	\$7.00
Lease Rate	\$24.00



MARY SOJCZYNSKI

Associate Vice President
 +1 519 804 4338
 mary.sojczynski@cushwakewr.com

4295 King Street East, Suite 401
 Kitchener, Ontario
 Main +1 519 585 2200
 Fax +1 519 650 5250
 cushwakewr.com