

For Lease

50 Victoria Street North Goderich, Ontario

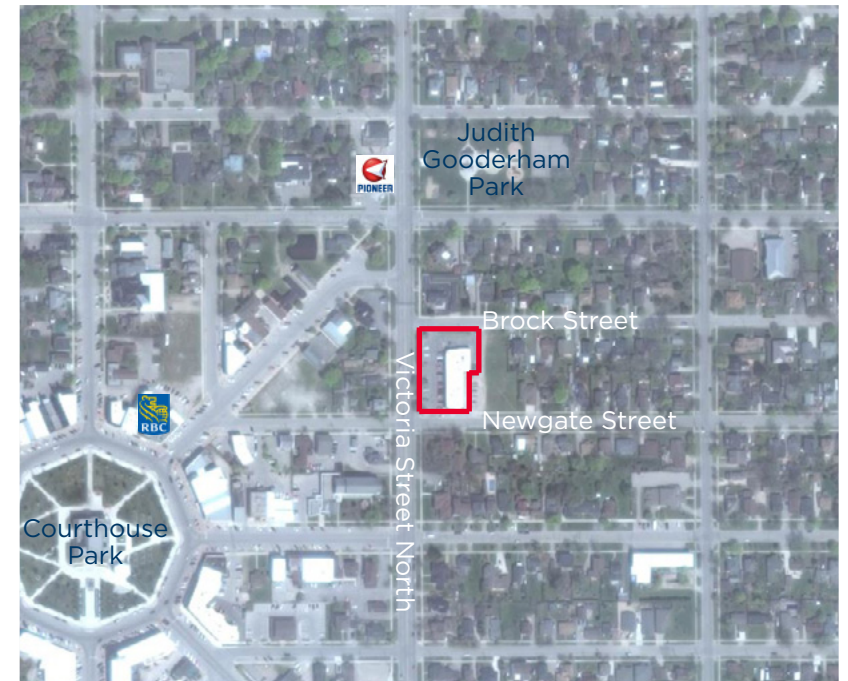
Property Highlights

- Extremely well located plaza with multiple opportunities
- Zoning allows a wide range of commercial uses
- Excellent access, exposure, and signage opportunities
- Plenty of parking with excellent co-tenants including Subway, New Orleans Pizza, and Macs Convenience Store

Criteria	1 KM	3 KM	5 KM
Population	3,527	8,277	8,975
Daytime Population	4,761	8,199	8,508
Household Spending	\$60,837	\$67,800	\$68,330
Household Income	\$68,397	\$76,195	\$76,801

Property Details

Suite Number	Square Footage	Asking Rent	Additional Rent
Suite 38	882 SF	\$14.00 PSF	\$8.31 PSF
Suite 46	1,700 SF	\$14.00 PSF	\$8.31 PSF



For more information, please contact:

Fraser Vrenjak
Sales Representative
+1 519 804 4355
fraser.vrenjak@cushwakewr.com